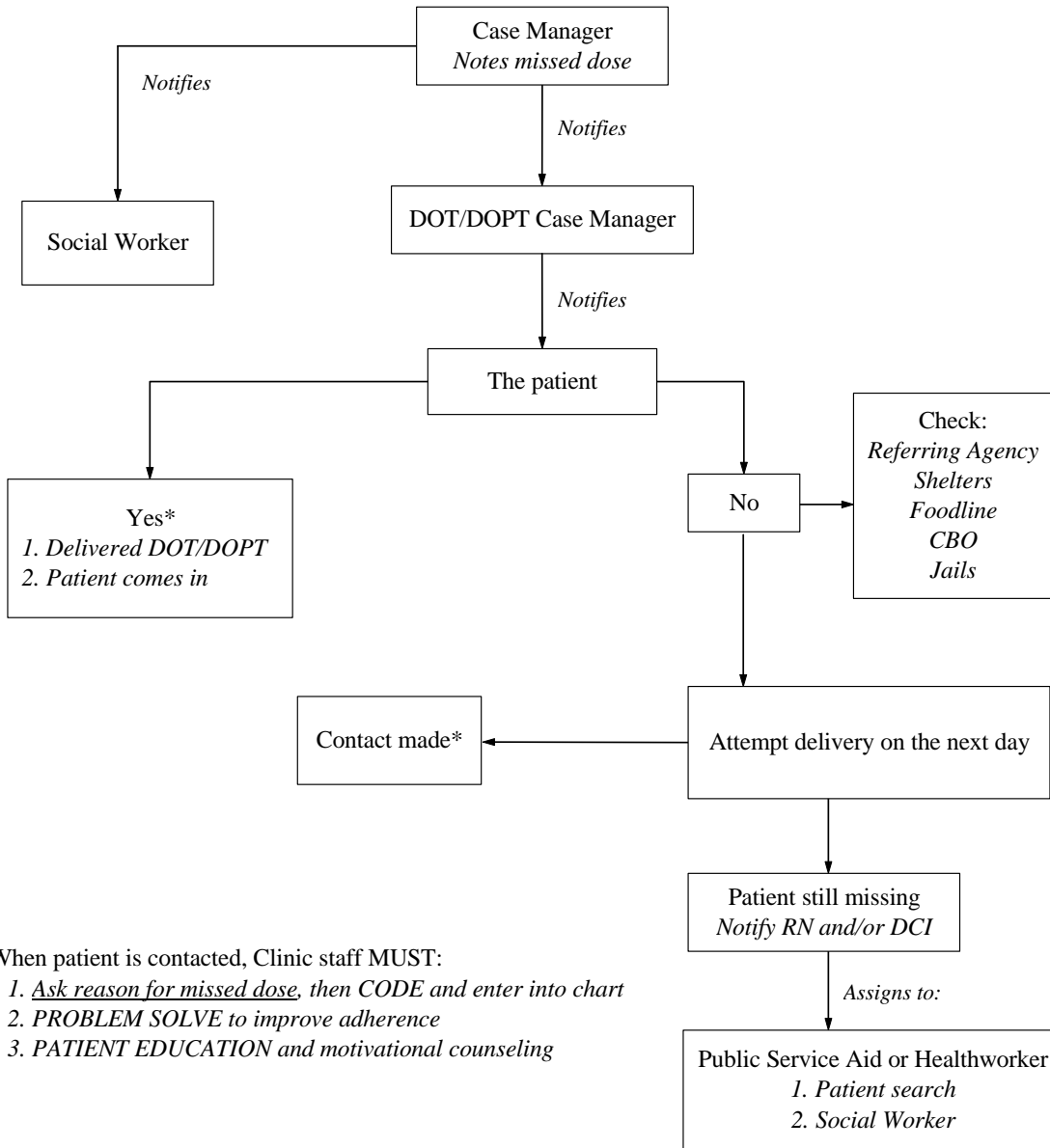


City and County of San Francisco TB Control Section

DOT/DOPT MISSED DOSE PROTOCOL



*When patient is contacted, Clinic staff MUST:

1. Ask reason for missed dose, then *CODE* and enter into chart
2. *PROBLEM SOLVE* to improve adherence
3. *PATIENT EDUCATION* and motivational counseling